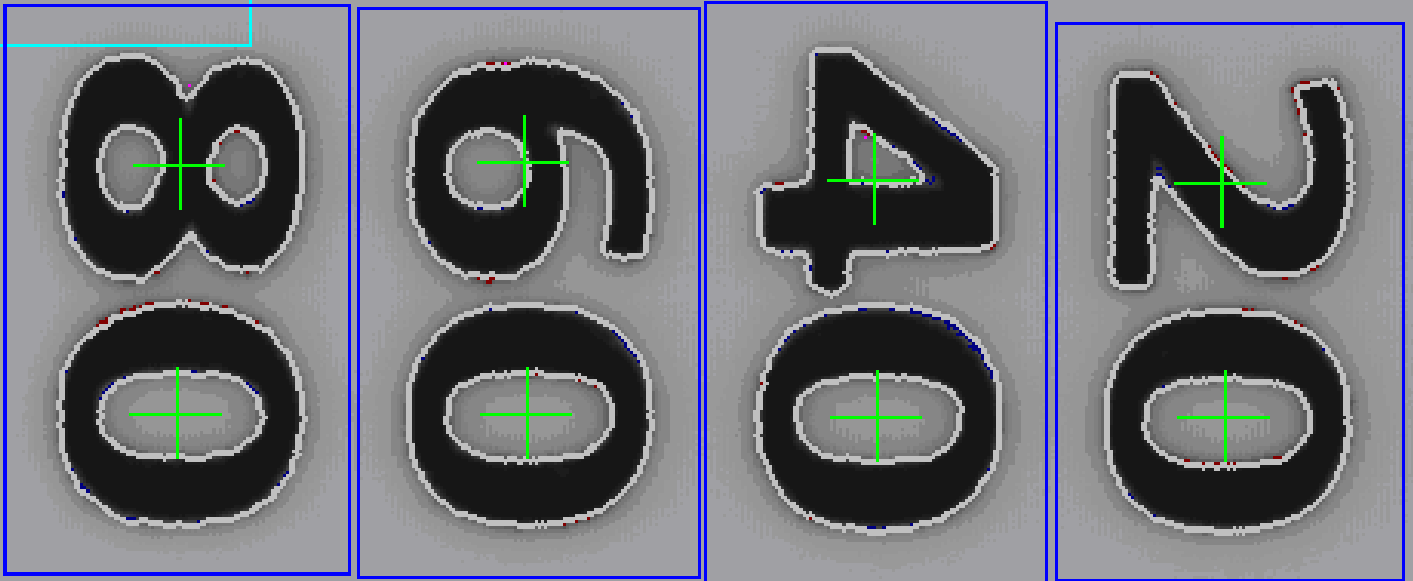
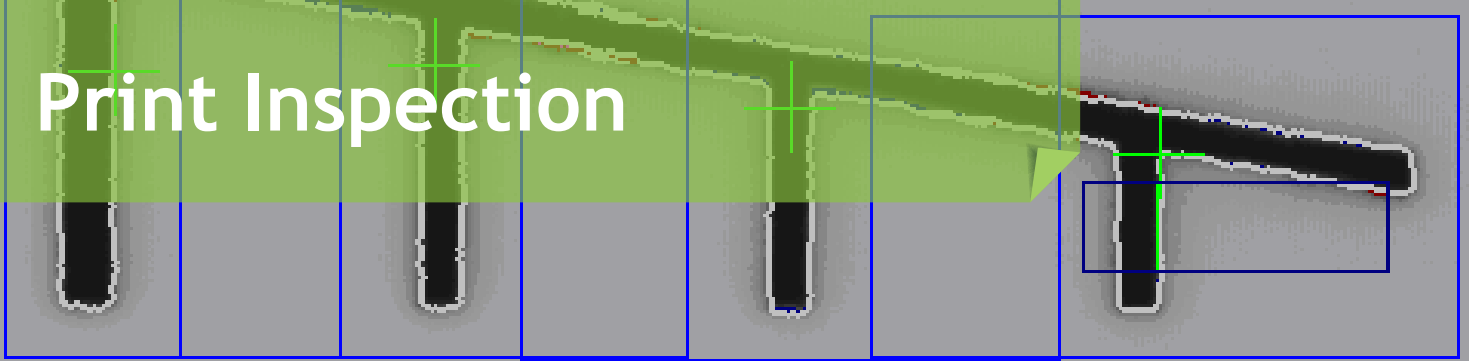


Print Inspection



Obtain 100% inspection with the advanced JLI Print Inspection System

Modern printers often work at a speed and complexity that makes it hard for operators to ensure the quality of each part or even to tell which components need attention when something goes wrong.

The JLI Print Inspection System is a 3rd generation vision system for 100% inspection of printed parts. The system is integrated in a stepped or continuous motion printer where it will inspect parts for print position, print quality, transparency and dirt. The integration enables immediate feedback of printer performance to the operator, and the vision system will continuously indicate the performance of each individual sheet, blanket and pin to assist in quick debugging and adjustment of the machine.

Automatic feed-back is also included, enabling the vision system to control the application of ink based on the measured density of the print. This will keep the print quality highly uniform without relying on operator time or skills.

Features

- 100% inspection
- Intuitive user interface tracks the source of the quality issue
- Speeds up the adjustment of the printing machine
- Keeps the amount of scrapped parts and down time to a minimum
- Automatic inking ensures high and uniform print quality
- Quick product or artwork change
- Measures missing or excess print, transparency and dirt
- Optional interface to central database system
- Internet connectivity for easy support

General

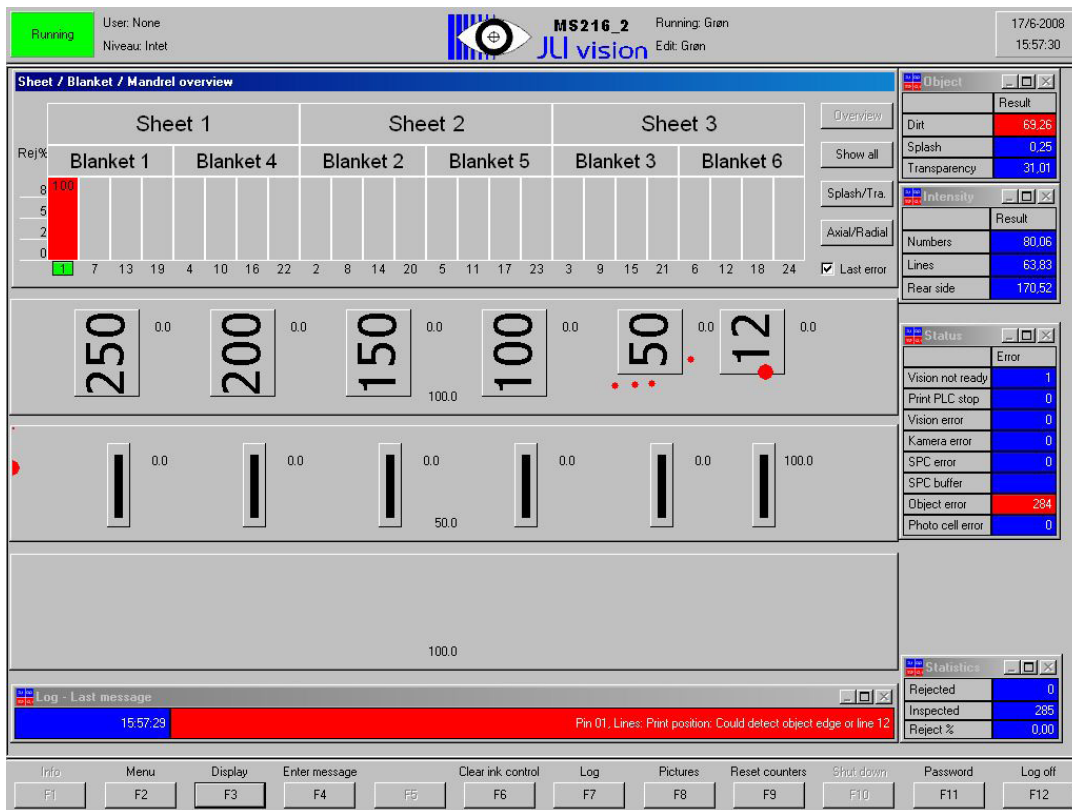
Speed:	250 parts/min
Cameras:	1-6 High resolution CCD
Artwork size:	Up to 200mm, 360
Operating temperatures:	+5° C - 30° C
Humidity:	20-80% non condensing
Power:	110V, 60Hz or 230V, 50Hz
Lens:	Special zoom optics
Computer:	Industrial vision PC's
Monitor:	21" flat screen
Lamp life:	+ 1 year
Dimensions:	On request

Measurements

Missing / Excess ink:	Each digit, number and line is checked individually.
Transparency:	Detection of low print density and optional feed-back.
Dirt:	All non-printed areas can be checked for dirt.

Interface

Vision input/output:	Digital signals and network connection to database.
----------------------	---



Intuitive graphical user interface.



Company Profile

JLI vision a/s develops, designs and manufactures dedicated turnkey vision systems for the international industry.

With more than 27 years of experience, JLI is among the oldest companies in the computer vision field. Our customers include well known international companies. JLI works in many different industries ranging from food processing to material handling, glass, steelworks, pharmaceutical, plastics and packaging.