



## General

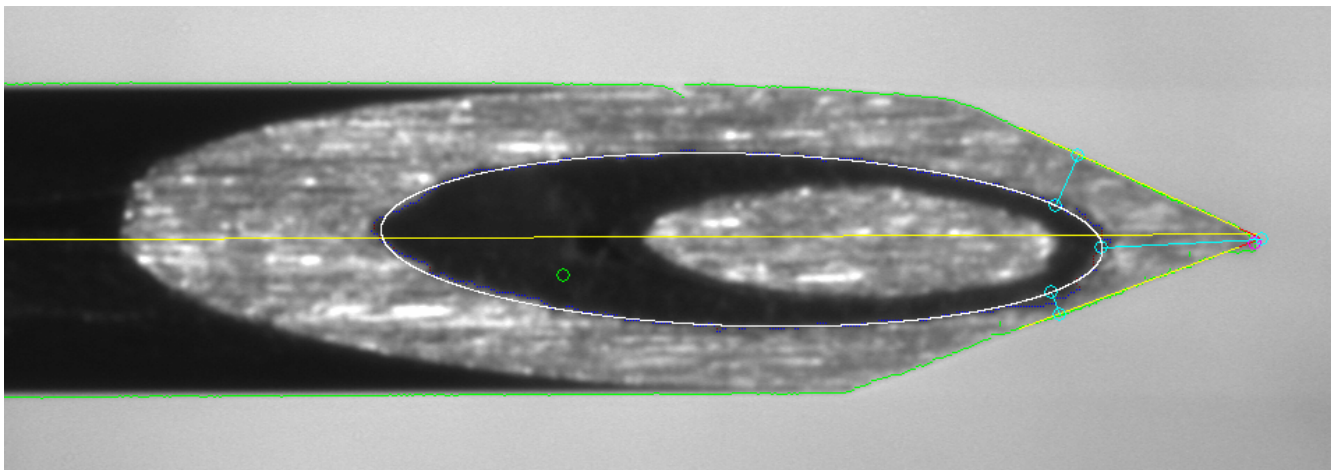
Speed:	1 needle / 3.5s
Cameras:	Industrial high resolution CCD
Needle size:	typically $\varnothing$ 0.3 - 0.8mm
Operating temperatures:	+5° C - 45°C
Humidity:	20-80% non condensing
Power:	110V, 60Hz or 230V, 50Hz
Lens:	Special zoom optics
Computer:	Industrial vision PC's
Monitor:	21" flat screen
Lamp life:	+ 1 year
Dimensions:	On request

## Measurements

Detects:	Hooks, burrs, needle sharpness, grind angle, size of grinds and symmetry of grind
Accuracy:	2 micron

## Interface

Vision input/output:	Digital signals and network connection to database.
----------------------	---



*Example of defective needle tip.*

## Company Profile



JLI vision a/s develops, designs and manufactures dedicated turnkey vision systems for the international industry.

With more than 27 years of experience, JLI is among the oldest companies in the computer vision field. Our customers include well known international companies. JLI works in many different industries ranging from food processing to material handling, glass, steelworks, pharmaceutical, plastics and packaging.