

# Catheter Inspection



*Catheter inspection can be performed on a wide range of different catheters*

JLI's pharmaceutical catheter inspection system is a compact unit that can be installed online/inline. The system is now second generation and have been developed to meet the high demands for the pharmaceutical industry with regards to quality and validation.

The system can be used for a wide range of different catheters such as urethral and intravenous production. The inspection system employ three high resolution matrix cameras and customized stabilized long life light sources.

Catheters are inspected for tip, punch holes and tube errors. Through the user-interface, the sensitivity can be set and defect patterns can be selected. This is easily done through a touch panel.

When defects exceed a selected tolerance, a signal is timed and can be sent to a reject mechanism. On request the system can create production reports.

## Features

- High accuracy tip and punch hole analysis
- 21 CFR PART 11 compliant
- Installed online on manufacturing equipment
- Fast changeover between different catheter types
- Clever integration of illumination
- Internet connectivity
- Easy setup via user friendly software
- Trend analysis and statistical process control tool
- System is validated according to GAMP
- Production reports available

## General

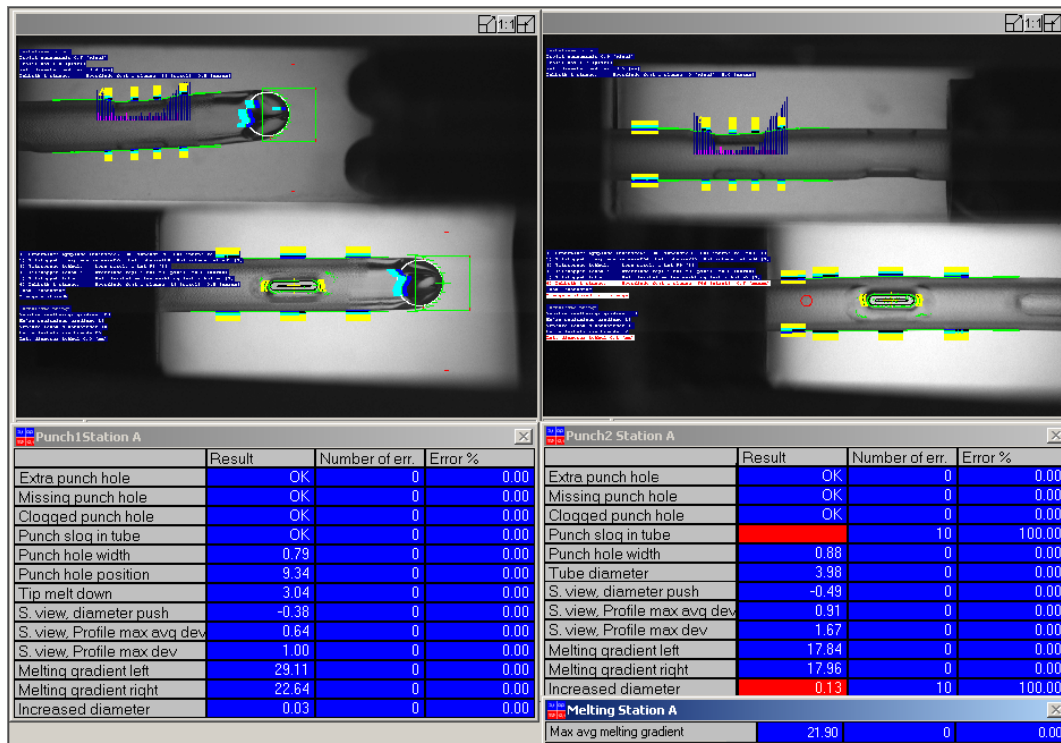
Line Speed:	< 5 catheter/s
Cameras:	3 industrial high resolution CCD
Catheter size:	Diameter: $\varnothing$ 2-15 mm Length: On request
Operating temperatures:	+5 C - 45 C
Humidity:	20-80% non condensing
Power:	200-230V, 50-60Hz
Lens:	Special macro optics
Computer:	Industrial vision PC
Monitor:	17" touchscreen
Lamp life:	+ 3 year
Dimensions:	On request (H x W x D)

## Measurements

Tip:	Unevenness and curvature
Punch holes:	Missing, extra and clogged Dimension and position
Tube	Diameter Impurities

## Interface

Vision input/output:	24V Production report
----------------------	--------------------------



Display of Catheter Inspection System



## Company Profile

JLI vision a/s develops, designs and manufactures dedicated turnkey vision systems for the international industry.

With more than 27 years of experience, JLI is among the oldest companies in the computer vision field. Our customers include well known international companies. JLI works in many different industries ranging from food processing to material handling, glass, steelworks, pharmaceutical, plastics and packaging.